

AID Sensor Sizing Instructions

AID sensors are made to fit your existing protective vest. For a proper fit, follow these measurement instructions to determine the proper AID sensor size:

1. Measure the height on the front of the protective vest. Be sure to measure the shortest height (i.e. the lowest part of the collar as shown).
2. Measure the width on the front of the vest at the narrowest point (i.e. chest width).
3. Measure the width on the front of the vest at the widest point (i.e. waist width).

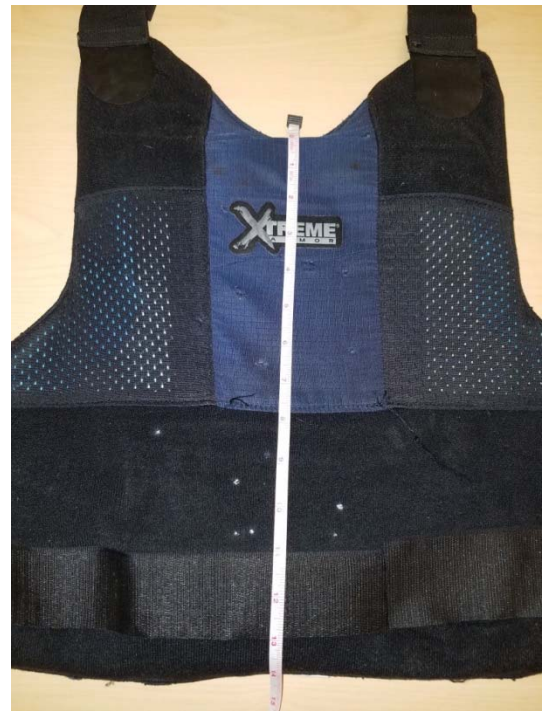


Figure 1, Measure Front Height



Figure 2, Measure Front Chest

4. Measure the back of the protective vest in the same way.



Figure 3, Measure Front Waist



Figure 4, Measure Back Dimensions

- Compare your measurements against the sizing chart to determine the proper size and part number for the front and the back (they may be two different sizes). For height and chest width – find the measurements in the chart that are equal to or up to 1 inch less than the actual measurement. For the waist width – find the measurement that is equal to or up to 4 inches less than the actual measurement.

Size Chart (inches)				
SSS	Size	Chest width	Height	Waist width
000	Rectangle 12x18	12	18	n/a
001	XSmallA	9	10.5	14.5
002	XsmallB	9	14	16
003	SmallA	9	12	16
004	SmallB	9	14	19
005	MediumA	10.5	12	20
006	MediumB	10.5	14	20
007	MediumC	10.5	15.5	24
008	LargeA	12	12	20
009	LargeB	12	14	21
010	LargeC	12	15.5	24
011	SWAT	11	14.5	n/a
012	SAPI_XSmall	7.25	11.5	n/a
013	SAPI_Small	8.75	11.75	n/a
014	SAPI_Medium	9.5	12.5	n/a
015	SAPI_Large	10	13.25	n/a
016	SAPI_Xlarge	11	14	n/a
017	SAPI_Side	6	8	n/a

Example: For the vest measurements pictured in this document, the front of the vest has measurements of 14" height, 12" chest width and 24" waist width. Those measurements align with the 009, LargeB (14x12x21) on the size chart. The back of the vest has measurements of 15.5" height, 12" chest width and 24" waist width. Those measurements align with the 010, LargeC (15.5x12x24) on the size chart. See those AID sensor sizes pictured below.



Figure 5, AID Sensor Size Example

Note: If you can't align your measurements with the size chart based the guidelines, record the measurements and take a photo of the vest for custom sizing.